

A methodological support to set up multidisciplinary group practices in Southeastern France

Authors

Hélène DUMESNIL¹, Leila DAGNET², Benoît SAUGERON³, Pierre SONNIER³, Pierre VERGER^{1,4,5}, Valérie GUAGLIARDO¹

1. ORS PACA, Southeastern Health Regional Observatory, Marseille, France 2. Région Sud, Southeastern Regional Council, Marseille, France 3. CRES PACA, Regional Committee for Health Education, Marseille, France 4. Aix Marseille University, IRD, AP-HM, SSA, VITROME, Marseille, France 5. IHU-Méditerranée Infection, Marseille, France

Conclusion : added values of public health territorial assessment

- Helps HPs to propose multidisciplinary group practices projects that match actual and future population health needs;
- Improves local dynamics and collective awareness of main public health issues ;
- Helps decision-makers to identify most vulnerable territories and prioritize support requests.

Background

- Despite high medical densities in Southeastern France, access to care and prevention is difficult in some territories;
- Since 2011, the Regional Council supports multidisciplinary group practices (MGP) to improve access to and quality of primary care (Figure 1);
- Health professionals (HPs) have to propose a health project addressing population main health needs in the area.

Objectives

- To provide tools and support to HPs during the main steps of creation of MGP.

Methods

Collaboration between the Southeastern Regional Health Observatory and the Regional Committee for Health Education.



Public health territorial assessment based on quantitative indicators and discussion of the results with stakeholders (Figure 2);



Identification of priorities taking into account population and HPs' needs;



Design of health project: it defines how HPs will work together and which activities they will set to cover public health needs in their territory.

Results

- Since 2011, 45 MGP projects have been supported : 19 were successful, 13 are still in progress and 13 were not completed ;
- Territorial assessments helped stakeholders to identify public health priorities territories and presented outlooks of the current and coming health needs of various areas.

Lessons : levers and barriers to the MGP setting up

- 😊 Initiation of the MGP project by HPs and existence of local dynamics, support of the project by local authorities;
- 😞 HP's preconceived ideas about MGP projects, absence of HP's 'leader'.

Figure 1. What is a MGP project ?

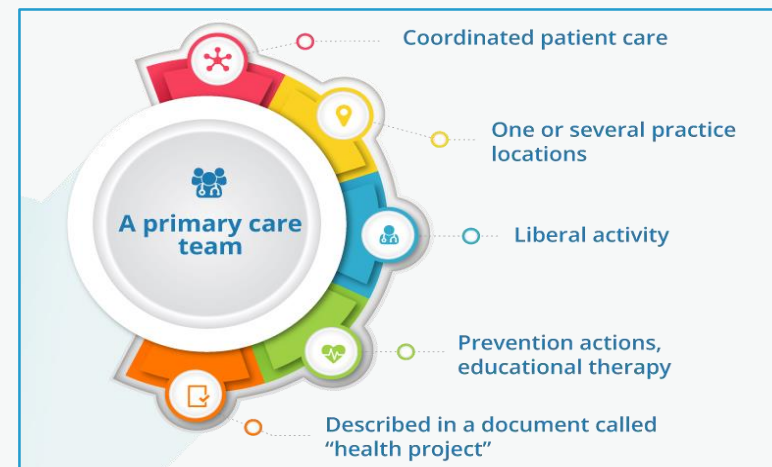


Figure 2. Territorial assessment main themes

